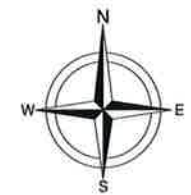
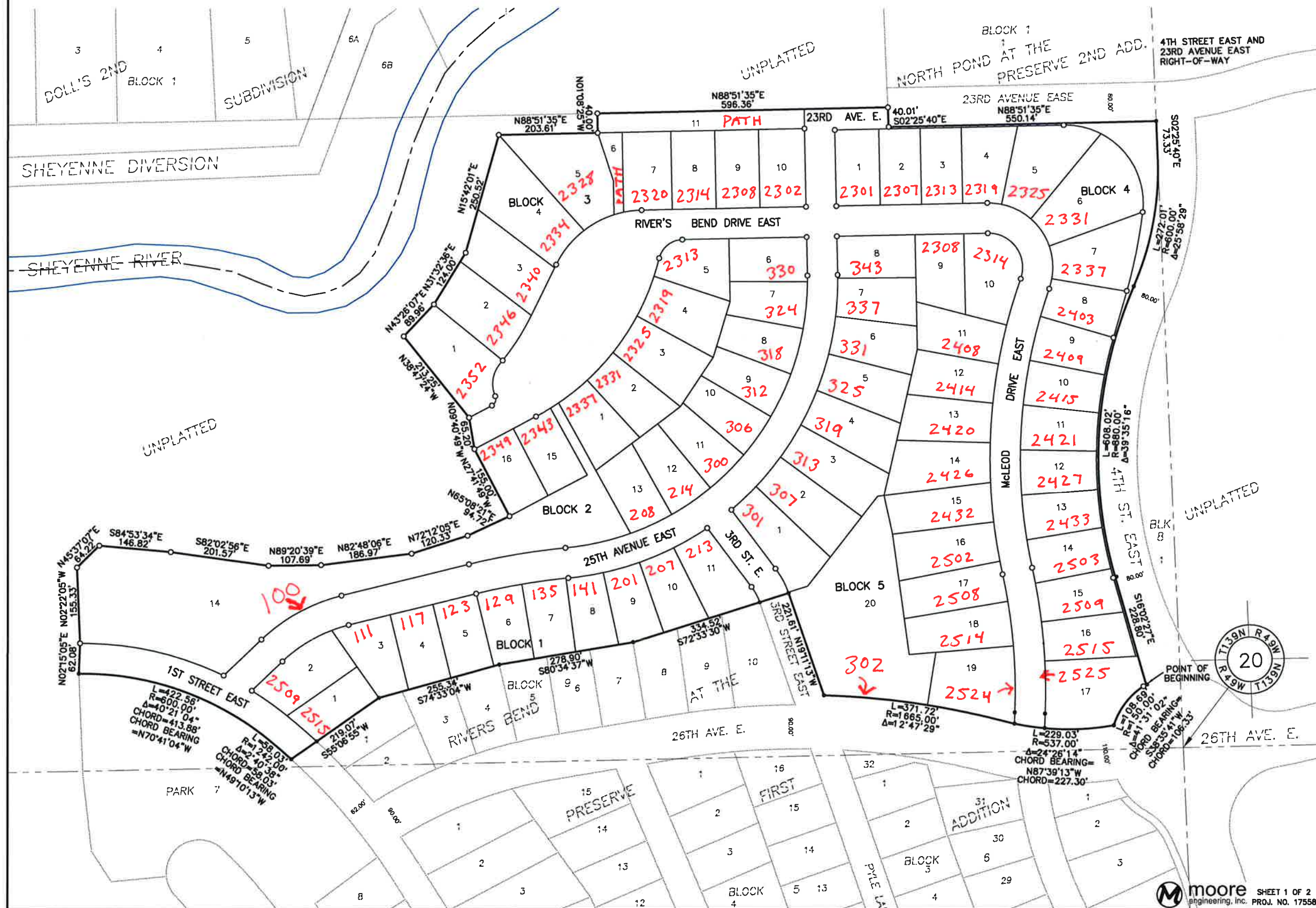


PLAT OF RIVER'S BEND AT THE PRESERVE SECOND ADDITION

TO THE CITY OF WEST FARGO, A REPLAT OF BLOCKS 7 & 8, RIVER'S BEND FIRST ADDITION TO THE CITY OF WEST FARGO, AND PLAT OF PART OF THE NORTHWEST QUARTER OF SECTION 20, TOWNSHIP 139 NORTH, RANGE 49 WEST, CASS COUNTY, NORTH DAKOTA.

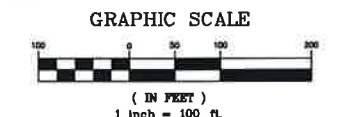


LEGEND

- IRON MONUMENT FOUND
- SET 5/8"X16" REBAR WITH YELLOW PLASTIC CAP #2086
- "L" DENOTES ARC LENGTH
- "R" DENOTES RADIUS LENGTH
- "Δ" DENOTES CENTRAL ANGLE
- △ ACCESS CONTROL

ALL UTILITY EASEMENTS ARE 10' WIDE ALONG AND ADJACENT TO STREET RIGHTS-OF-WAY AND ON EACH SIDE OF REAR LOT LINES AS SHOWN UNLESS OTHERWISE NOTED.

STORM SEWER EASEMENTS ARE 10' WIDE LYING 5' ON EACH SIDE OF SIDE LOT LINES AS SHOWN UNLESS OTHERWISE NOTED.



BASIS OF BEARINGS: NORTH POND AT THE PRESERVE SECOND AND RIVER'S BEND AT THE PRESERVE FIRST ADDITIONS AS RECORDED.