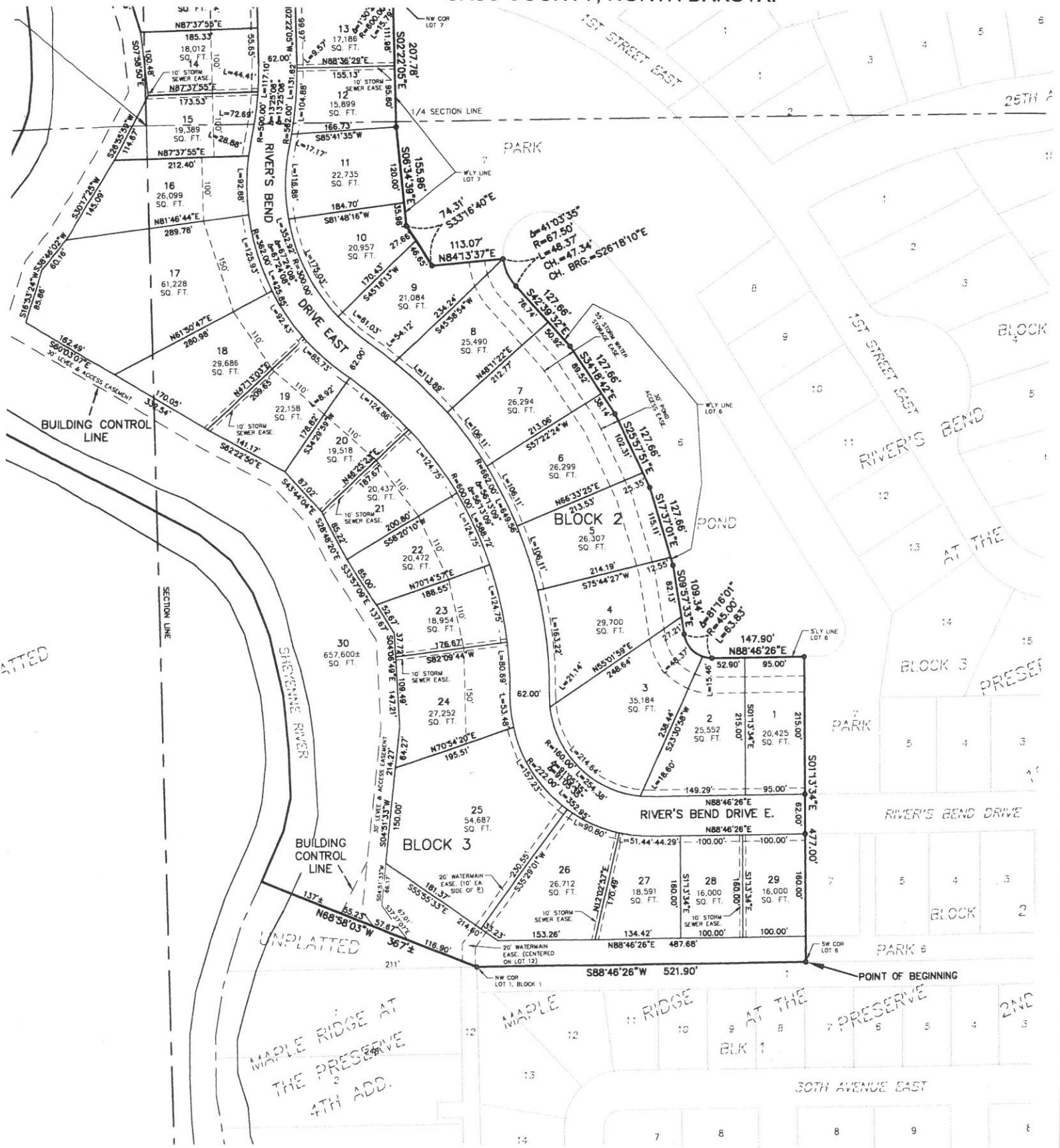


**PLAT OF**  
**RIVER'S BEND AT THE PRESERVE FOURTH ADDITION**  
 TO THE CITY OF WEST FARGO, A PLAT OF PART OF THE EAST HALF OF SECTION 19 AND A PART OF THE WEST HALF OF SECTION 20, ALL IN TOWNSHIP 139 NORTH, RANGE 49 WEST, CASS COUNTY, NORTH DAKOTA.



ATTED

MAPLE RIDGE AT THE PRESERVE 4TH ADD.

BLOCK 2

BLOCK 3

BLOCK 4

BLOCK 5