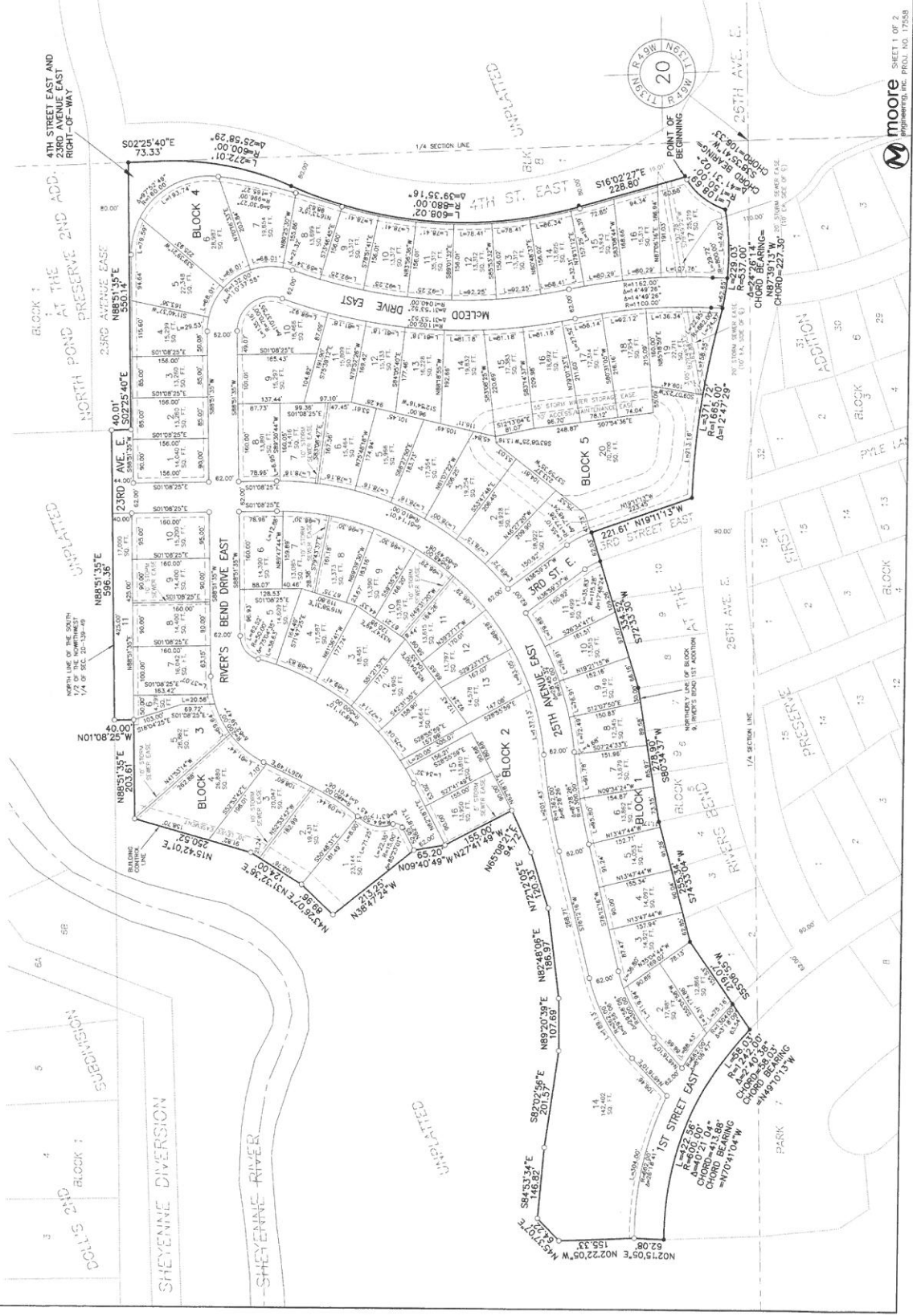


# RIVER'S BEND AT THE PRESERVE SECOND ADDITION

PLAT OF RIVER'S BEND AT THE PRESERVE SECOND ADDITION TO THE CITY OF WEST FARGO, A REPLAT OF BLOCKS 7 & 8, RIVER'S BEND FIRST ADDITION TO THE CITY OF WEST FARGO, AND PLAT OF PART OF THE NORTHWEST QUARTER OF SECTION 20, TOWNSHIP 139 NORTH, RANGE 49 WEST, CASS COUNTY, NORTH DAKOTA.



- ### LEGEND
- 10' EASEMENT
  - 20' EASEMENT
  - 30' EASEMENT
  - 40' EASEMENT
  - 50' EASEMENT
  - 60' EASEMENT
  - 75' EASEMENT
  - 100' EASEMENT

ALL UTILITY EASEMENTS ARE TO BE LOCATED AND ADJUSTED BY THE SURVEYOR. THE LOCATION OF ALL UTILITY EASEMENTS ARE TO BE SHOWN UNLESS OTHERWISE NOTED. A 10' EASEMENT IS TO BE SHOWN UNLESS OTHERWISE NOTED. A 20' EASEMENT IS TO BE SHOWN UNLESS OTHERWISE NOTED. A 30' EASEMENT IS TO BE SHOWN UNLESS OTHERWISE NOTED. A 40' EASEMENT IS TO BE SHOWN UNLESS OTHERWISE NOTED. A 50' EASEMENT IS TO BE SHOWN UNLESS OTHERWISE NOTED. A 60' EASEMENT IS TO BE SHOWN UNLESS OTHERWISE NOTED. A 75' EASEMENT IS TO BE SHOWN UNLESS OTHERWISE NOTED. A 100' EASEMENT IS TO BE SHOWN UNLESS OTHERWISE NOTED.



BASE OF BEARING NORTH POINT AT THE PRESERVE ADDITIONS AS RECORDED.

SURVEYOR'S CERTIFICATE  
DOCUMENT NO. 1417761  
DATE: 08/14/2019  
SURVEYOR'S CERTIFICATE  
DOCUMENT NO. 1417761

1417761  
Page 1 of 1  
August 14, 2019  
Moore Engineering, P.C.  
Moore 7 / Page 81 / MAP 150106

moore  
ENGINEERING, INC. PROJ. NO. 17558